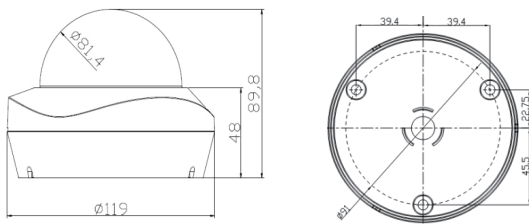


SDP22E-F8000N**Dimensions****Product Summary**

- 1/2.9" SONY CMOS 2.48M Sensor
- Full HD (1920 x 1080P 30fps) EX-SDI I Output
- DWDR (Digital Wide Dynamic Range)
- 3D + 2DNR (Digital Noise Reduction)
- SENS UP, SMART IR, DEFOG
- HLMASK (High Light Masking)
- Privacy Masking, Motion Detection
- LSC (Lens Shading Correction)
- ACE (Adaptive Contrast Enhancer)
- 3.6mm Fixed Mega Pixel Lens
- OSD (On Screen Display-Option)
- CVBS Output

Major Specifications

* OSD Menu is subject to change without prior notice

MODEL NAME	SDP22E-F8000N	
Image Device	1/2.9" SONY CMOS, 2.43Megapixel	
Total Pixels	2,000(H) x 1,241(V) / 2,482,000 (Pixel)	
Effective Pixels	1,984(H) x 1,225(V) / 2,430,400 (Pixel)	
Scanning System	2:1 Interlace	Non- Interlace
Synchronization	Internal Synchronization	
Horizontal Resolution	1080P @30fps	1080P @25fps
Video Output	Basic Output EX-SDI I & CVBS (SDI, EX-SDI I, EX-SDI II) & (TVI, CVI, CVBS) SELECTABLE	
S/N Ratio	More Than 52dB (AGC OFF / F1.2)	
Shutter / AGC	Auto (High, Low Luminance) / Manual	
White Balance	ATW (Speed, Delay, ATW, Environment) / User1,2 / Manual	
Picture Adjustment	Mirror / Brightness / Contrast / Sharpness / Hue / Gain	
ATR	ON / OFF	
Motion / Privacy	ON / OFF	
Lens	3.6mm Fixed Mega Pixel Lens	
LED	X	
Storage Temp.	14°F ~ 122°F (-10°C~ + 50°C)	
Operating Temp.	4°F ~ 140°F (-20°C~ + 60°C)	
Humidity	Less than 80%	
Cable	Standard 1.0m BNC/DC Jack	
Power Source	DC12V 100mA	
Dimensions	119mm(Φ) X 89.8mm(H)	
Net Weight	Approx. 250g	