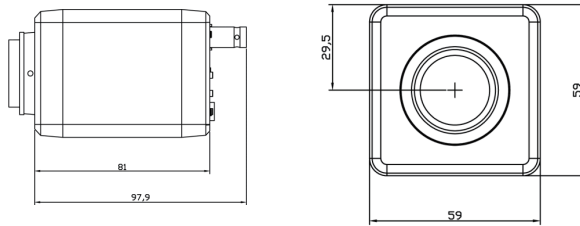


SSP22-N56



Dimensions



Product Summary

- 1/3" Progressive CMOS Sensor
- Full HD (1920 x 1080 30P) Video Out
- WDR (Wide Dynamic Range)
- 3D + 2DNR (Digital Noise Reduction)
- SENS UP, SMART IR, DEFOG
- HLMASK (High Light Masking)
- Privacy Masking, Motion Detection
- LSC (Lens Shading Correction)
- ACE (Adaptive Contrast Enhancer)
- C / CS Mount (ICR,OPTION)
- CVBS Out (For Installer)

Major Specifications

* OSD Menu is subject to change without prior notice

MODEL NAME	SSP22-N56
Image Device	1/3" SONY CMOS, 2.43Megapixel
Total Pixels	2000(H) x 1241(V) / 2,482,000 (Pixel)
Effective Pixels	1984(H) x 1225(V) / 2,430,400 (Pixel)
Scanning System	Progressive Scan
Synchronization	Internal Synchronization
Horizontal Resolution	More than 1,000 TV Lines
Video Output	HD SDI / CVBS (For Installer)
S/N Ration	More than 50dB (AGC Off)
Lens	C / CS Mount
LED	x
Storage Temp.	14°F ~ 122°F (-10°C~ + 50°C)
Operating Temp.	4°F ~ 140°F (-20°C~ + 60°C)
Humidity	Less than 80%
Power Source	DC12V 110mA
Dimensions	59mm x 97.9mm x 59mm
Net Weight	Approx. 190g