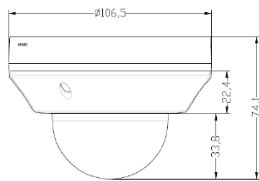


SV-M555



Dimensions



Product Summary

- 1/2.8" Sony IMX335 CMOS sensor
- Full HD resolution 2592 x 1944P
- Ultra low illumination 0.01Lux
- Day/Night (ICR), AWB, 2D/3D-DNR, IR-CUT
- D-WDR, Motion Detection, Privacy Mask, Mirror, rotate
- RTSP and Onvif 17.06 compatible
- H.265/H.264 dual-stream media server
- Easy-to-use P2P Cloud service
- Multi web browser, PC Client, mobile APP remote access
- Audio input/output; Alarm input/ output ; SD card slot
- Lightning protection 4000V
- 24 pcs SMD IR Leds, IR distance 40 meters
- 2.8-12mm motorized lens

Major Specifications

* Specifications are subject to change without prior notice.

Model Name		SV-M555
Camera	Image Sensor	1/2.8" Sony IMX335 CMOS
	Effective Pixels	2592(H)×1944 (V)
	Electronic Shutter	AUTO, 1/25s ~ 1/100000s
	Min. Illumination	0.01Lux@F1.2(AGC ON), 0Lux IR on
	Day/Night	Auto/Color/(B/W)/Timing
	WDR	Digital WDR
	White Balance	Auto
Other	AGC,2/3 DNR,Motion Detection, Privacy Mask, Mirror, Flip	
Encode	Embedded Solution	Mstar MSC316DM
	Video Standard	H.265/H.264
	Video Resolution	MainStream:15fps@5MP(2592x1944),25fps@4MP/3MP,30fps@1080P/720P Sub stream: D1/VGA(640x480)/360P/QVGA@25fps
	Video Bitrates	512Kbps - 6Mbps, VBR/CBR
IR Led	IR Led	3 pcs SMD Array IR Leds
	IR Distance	20 M
Lens	Focal length	2.8-8 mm AF Motorized lens
	Zoom	3x optical zoom
PTZ	Pan/Tilt Range	Pan: 0° ~ 350°; Tilt: 5° ~ 90°
	Manual Control Speed	80°/Sec
Other Function	POE	Internal POE
	Audio	Internal Microphone
	Reset	Cable with reset button
Network Services	Protocol	RTSP/FTP/DHCP/DDNS/NTP/SMTP/NFS
	P2P	Yes
	Web	IE , firefox 32bit ESR
	Media	CMS, Android, IOS
	ONVIF	17.06 compatible
General	Network Port	1-RJ45, 100Mbps, POE optional
	Power Supply	12 VDC ± 10%
	Power Consumption	< 5 W
	Operating Temp.	-30℃-(+60)℃, 10%-90%RH