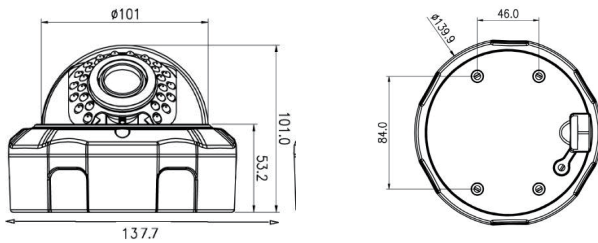


SVP22T-FIR1030



Dimensions



Product Summary

- 1/3" Progressive CMOS Sensor
- Full HD (1920 x 1080 30P) TVI Video Out
- WDR (Wide Dynamic Range)
- 3D + 2DNR (Digital Noise Reduction)
- SENS UP, SMART IR, DEFOG
- HLMASK (High Light Masking)
- Privacy Masking, Motion Detection
- LSC (Lens Shading Correction)
- ACE (Adaptive Contrast Enhancer)
- 3.6mm Mega Pixel Lens (ICR)
- 30pcs IR LEDs
- OSD (On Screen Display) Option

Major Specifications

* OSD Menu is subject to change without prior notice

MODEL NAME	SVP22T-FIR1030
Image Device	1/3" SONY CMOS, 2.43Megapixel
Total Pixels	2000(H) x 1241(V) / 2,482,000 (Pixel)
Effective Pixels	1984(H) x 1225(V) / 2,430,400 (Pixel)
Scanning System	Progressive Scan
Synchronization	Internal Synchronization
Horizontal Resolution	More than 1,000 TV Lines
Video Output	1080P(Full-HD) TVI (NTSC/PAL)
S/N Ration	More than 50dB (AGC Off)
Lens	3.6mm Mega Pixel Lens (ICR)
LED	30pcs IR LEDs
Storage Temp.	14°F ~ 122°F (-10°C~ + 50°C)
Operating Temp.	4°F ~ 140°F (-20°C~ + 60°C)
Humidity	Less than 80%
Power Source	DC12V 400mA
Dimensions	137.1mm(W) X 101mm(H)
Net Weight	Approx. 650g